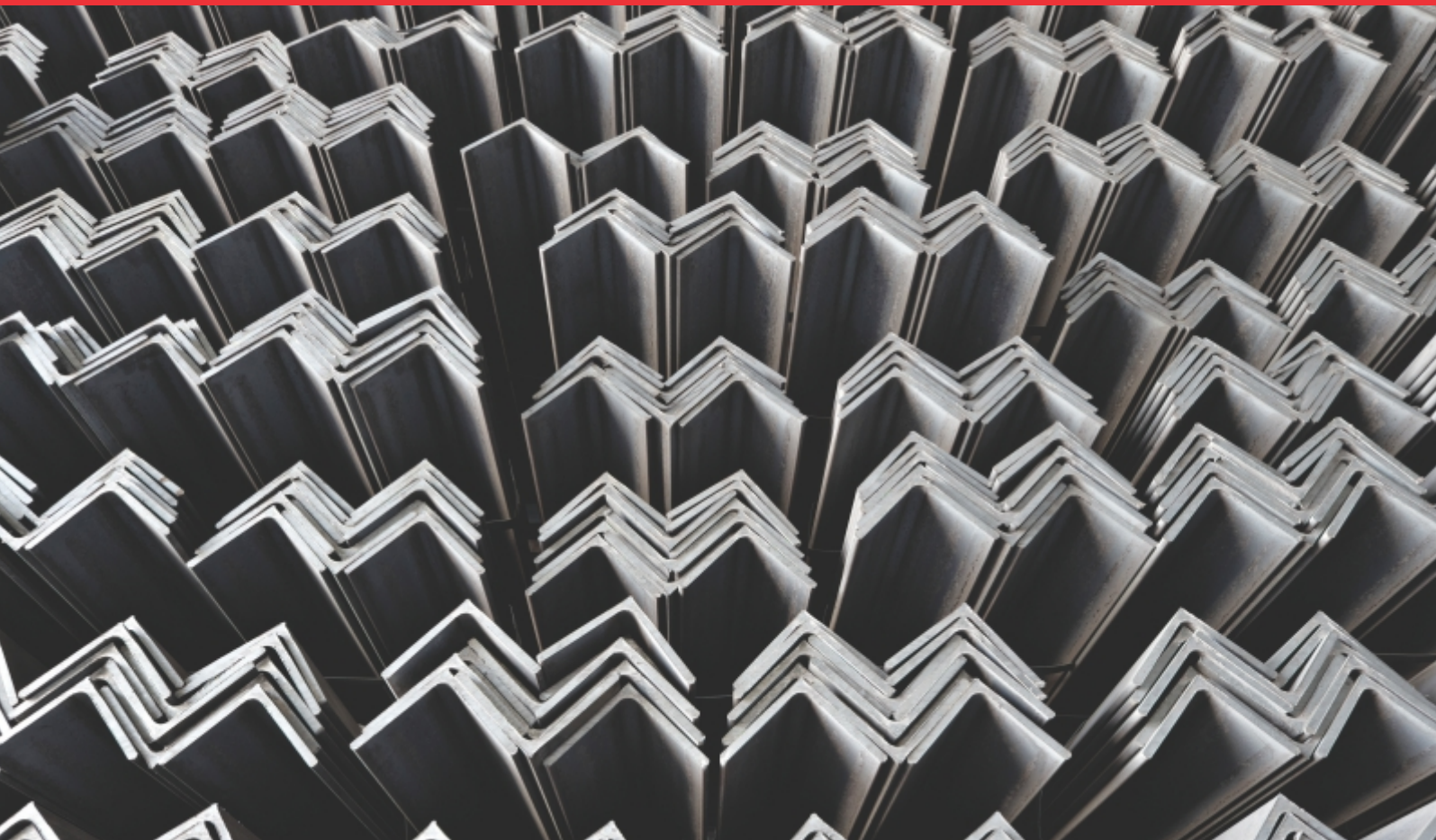


Stainless Steel Equal Angle Bars



AN ISO 9001 : 2000 COMPANY



www.jyotisteel.com

Stainless Steel Equal Angle Bars

Grade – 201 (0.30 to 1% nickel)

Sizes in (mm)	Thickness in (mm)
25 X 25	3, 4, 5, 6
25.4 X 25.4	3.17, 4.76, 6.35
30 X 30	3, 4, 5, 6
31.7 X 31.7	3.17, 4.76, 6.35
32 X 32	3
35 X 35	3, 4, 5, 6
38 X 38	3, 4, 5, 6
38.1 X 38.1	3.17, 4.76, 6.35
40 X 40	3, 4, 4.5, 5, 6
44.45 X 44.45	3.17, 4.76, 6.35
45 X 45	3, 4, 5, 6
50 X 50	3, 4, 4.5, 5, 6
50.8 X 50.8	3.17, 4.76, 6.35
60 X 60	5, 6, 7
63.5 X 63.5	4.76, 6.35
65 X 65	5, 6, 7
75 X 75	5, 6, 7, 8, 9, 10

Grade – 304, 316

Sizes in (mm)	Thickness in (mm)
25 X 25	3, 4, 5, 6
25.4 X 25.4	3.17, 4.76, 6.35
30 X 30	3, 4, 5, 6
31.7 X 31.7	3.17, 4.76, 6.35
32 X 32	3
35 X 35	3, 4, 5, 6
38 X 38	3, 4, 5, 6
38.1 X 38.1	3.17, 4.76, 6.35
40 X 40	3, 4, 4.5, 5, 6
44.45 X 44.45	3.17, 4.76, 6.35
45 X 45	3, 4, 5, 6
50 X 50	3, 4, 4.5, 5, 6
50.8 X 50.8	3.17, 4.76, 6.35
60 X 60	5, 6, 7
63.5 X 63.5	4.76, 6.35
65 X 65	5, 6, 7
75 X 75	5, 6, 7, 8, 9, 10

Supply Conditions

Length – Upto 6 Meters

Hot Rolled, Annealed Pickled and Shot Blasted

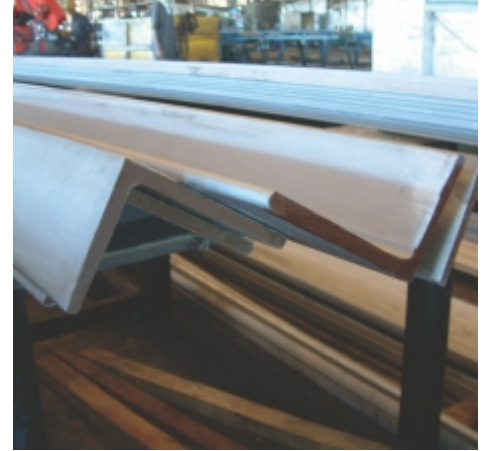
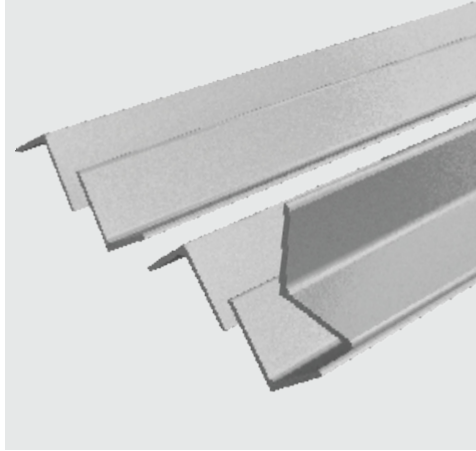
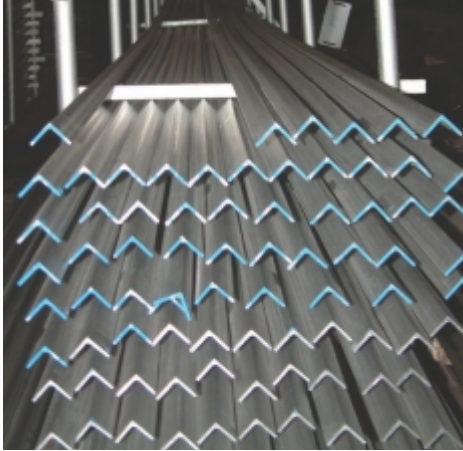
Both ends are Color Coded as per the Customers Specific Requirement

Specifications – as per EN, DIN, JIS, ASTM, BS, ASME, AISI, etc.

100% Identified by Handheld Spectrometer

Laser printing as per Grade & Size

Free from Radioactive Elements & Mercury, Lead contamination



Office : Kakad Bhavan, 4th Floor, 30th Road,
Opp. Gaiety Galaxy Cinema, Bandra (West), Mumbai - 400 050. India

Tel. : +91 22 2645 5474 / 75 / 76 / 77 • Fax : +91 22 2645 5478

E-mail : export@jyotisteel.com

Factory : Survey No. 10/1, 10/3, 10/4, 10/6, 10/8, 10/11, At Post Honad, Tal – Khalapur,
Raigad, Maharashtra - 410 202. India

Website : www.jyotisteel.com